

Hakenriegelschloss mit Schließblech
Roller shutter rim lock with striking plate

Dornmaß / Backset: 25mm

Material: Zamak vernickelt /
Zinc alloy nickel plated

20

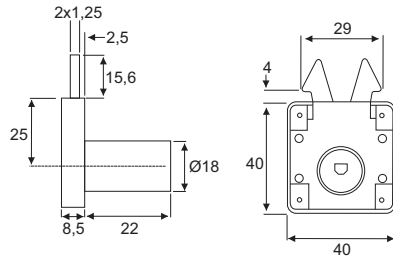
Art. No.

Lad / Drawer

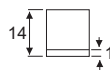
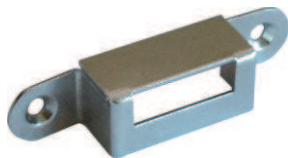
104 101757



Ø 3,5mm



Ø 3,0mm



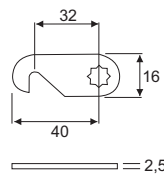
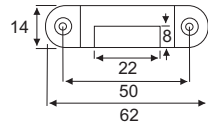
Schließblech, versetzt
Striking plate, recessed

Material: Stahl vernickelt /
Steel nickel plated

Art. No.

20

104 103038



Hebelschloss mit Haken - Schließhebel,
90° Schließweg

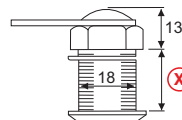
Lever lock with hook lever, 90° locking travel

Material:

Schloss / Lock: Zamak vernickelt / Zinc alloy nickel plated

Schließriegel / Lever: Stahl chromatiert / Steel galvanised

20



Schließweg
Closure travel

X =
(max. Türstärke /
max. door thickness)

Art. No.

A(D,F,G) 17mm 104 100455

A(D,F,G) 22mm 104 102856

A(D,F,G) 30mm 104 102366

Zubehör / Accessories:

Schließblech 1501.116 siehe Seite 1.30
Striking plate 1501.116 on page 1.30

